



SHELL ROTELLA® T5 10W-30 SYNTHETIC BLEND TECHNOLOGY

All The Hard Work You Expect, Only Better

Triple Protection®, and more

Shell Rotella® T5 synthetic blend heavy duty engine oil with **Triple Protection Plus™** technology uses synthetic base oils plus advanced additive technology to provide protection against wear, deposits and oil breakdown PLUS:

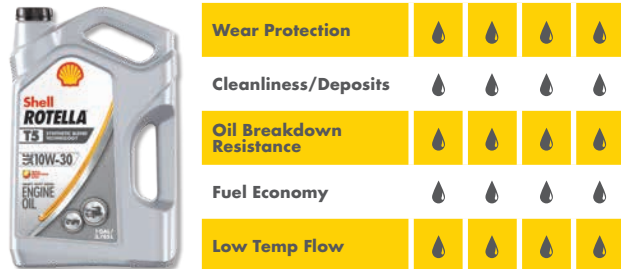
- Better fuel economy
- Better low temperature flow

*Compared to SAE 15W-40.

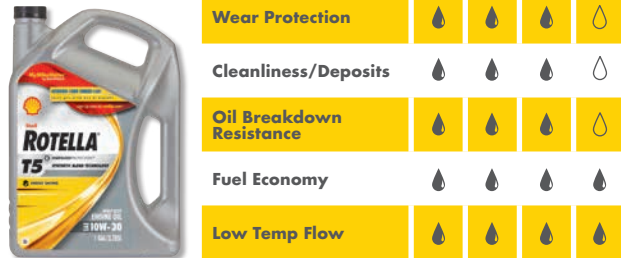


Shell Rotella® T5 10W-30 Synthetic Blend heavy duty engine oil delivers all the benefits you've come to expect from Shell Rotella®, and then some.

Relative Protection*



CK-4 Formulation



T5 Formulation

*The number of oil droplets indicates relative performance

For every hard working need

Shell Rotella® T5 10W-30 Synthetic Blend is suitable for a wide range of heavy duty engine applications. With its wide range of specifications and approvals from many of the world's leading engine makers, it is an excellent choice for on-highway fleets, construction, agriculture and diesel pick-up trucks, including high-power vehicles where resistance to increased heat and stress is required.

Triple Protection Plus

Triple Protection Plus™ is the unique combination of Triple Protection® - advanced additive technology and synthetic base oils. Triple Protection Plus™ represents protection against wear, deposits, oil breakdown plus better fuel economy performance. This unique combination helps to deliver excellent equipment protection, long engine life and maintain viscosity control under high temperatures.

The Results:

- Enhanced engine protection
- Extended oil life
- Better fuel economy performance
- Better low temperature flow

* Compared to a conventional SAE 15W-40

Going beyond CK-4 wear limits

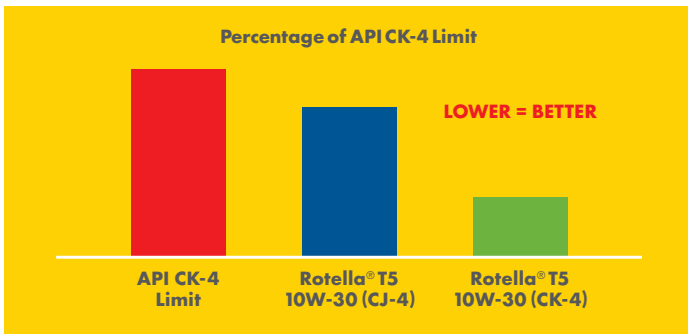
Shell Rotella® T5 10W-30 Synthetic Blend works even harder than new CK-4 specifications require. It is proven to provide excellent performance across API CK-4 wear tests, **delivering an average of 44% better than the maximum wear requirements.**

Thinner oil that protects like a 15W-40

In extensive real world field testing, over 500,000 miles and with long drain intervals, Shell Rotella® T5 10W-30 Synthetic Blend proved that a thinner viscosity can protect as well as Shell Rotella® T4 Triple Protection® heavy duty engine oil 15W-40. It also shows improved wear protection vs. the previous generation (CJ-4) of Shell Rotella® T5 10W-30 Synthetic Blend Technology.

Shell ROTELLA®

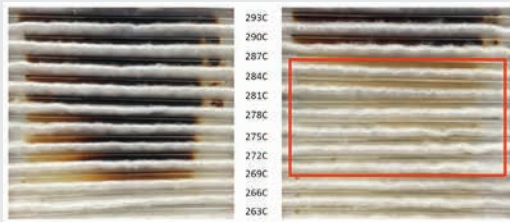
The Engine Oil That Works As Hard As You.™



Strong cleanliness

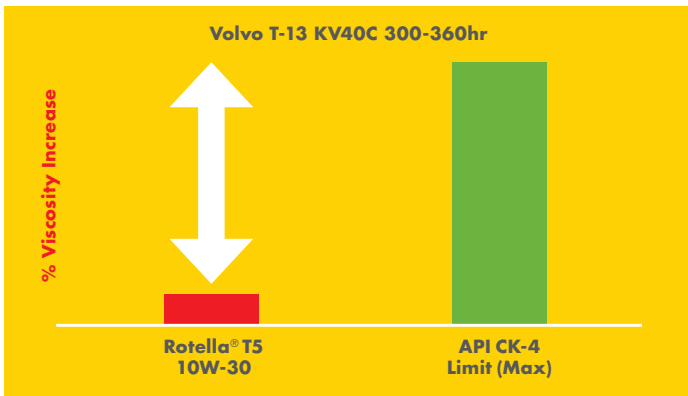
Multiple tests demonstrate that Shell Rotella® T5 10W-30 Synthetic Blend provides excellent piston cleanliness, exceeding stringent Mercedes and Volvo limits for piston cleanliness.

Shell Rotella® T5 10W-30 Synthetic Blend Technology also shows better deposit control at higher temperatures vs. the previous generation (CJ-4) of Shell Rotella® T5 10W-30 Synthetic Blend Technology.



CJ-4 Shell Rotella® T5 Heavy Duty Engine Oil 10W-30

CK-4 Shell Rotella® T5 Heavy Duty Engine Oil 10W-30



PRODUCT MATERIAL CODE & PACKAGE SIZE

| PRODUCT | 3x1 GAL JUGS | 2x2.5 GAL | 55 GAL DRUM | 275 GAL TOTE | BULK |
|--------------------|--------------|-----------|-------------|--------------|-----------|
| 10W-30 CK-4 | 550045130 | 550046213 | 550045131 | 550045134 | 500010047 |
| 15W-40 CK-4 | 550045348 | 550045132 | 550046214 | | 500010132 |

Improved oil breakdown resistance for long oil life

Shell Rotella® T5 10W-30 Synthetic Blend has improved its high temperature oxidation protection, again. Compared to the previous generation (CJ-4) of Shell Rotella® T5 10W-30 Synthetic Blend, the latest installment shows improved oxidation protection, and far exceeds API CK-4 limits in the Volvo T-13 tests.

Saving more of your fuel

Tests prove that Shell Rotella® T5 10W-30 Synthetic Blend provides better fuel economy benefits when compared to mineral 15W-40 viscosity products. In fact, Shell Rotella® T5 10W-30 Synthetic Blend gives you **up to 2% in fuel economy savings**, helping you stretch your budget and improve your business' bottom line.

Bring on the cold

Shell Rotella® T5 10W-30 Synthetic Blend excels at low temperature oil flow. Compared to all 15W-40s, tests prove that Shell Rotella® T5 Synthetic Blend 10W-30 has better cold cranking properties and low temperature pumpability at -25°C and -30°C respectively. That means it reaches critical engine parts faster in cold temperatures, to minimize engine wear and make hard work easier in harsh environments.

For more information, contact your local Shell Lubricants Representative or visit www.Rotella.com

SPECIFICATIONS AND APPROVALS

| SAE VISCOSITY GRADE | | |
|--|--------|--------|
| | 10W-30 | 15W-40 |
| API CK-4, CJ-4, CI-4 PLUS, CI-4, CH-4, ACEA E9; Cummins CES 20086; Volvo VDS-4.5; DDC DFS 93K222; Caterpillar ECF-2, ECF-3; MACK EOS-4.5; Ford WSS-M2C171-F1 | ✓ | |
| API CK-4, CJ-4, CI-4 PLUS, CI-4, CH-4, ACEA E9; JASO DH-2; Cummins CES 20086; Volvo VDS-4.5; DDC DFS 93K222; Caterpillar ECF-2, ECF-3; MB-Approval 228.31; MAN M3575; MTU Category Type 2.1; Deutz DQC-III 10 LA; MACK EOS-4.5; Ford WSS-M2C171-F1 | ✓ | |

The term 'Shell Lubricants' collectively refers to individual Shell Group companies engaged in the lubricants business throughout the world. These are separate and distinct entities. The collective expressions 'Shell' and 'Shell Lubricants' may be used herein for convenience where reference is made in general to those companies or where no useful purpose is served by identifying any particular company or companies.